

Electronic Sales Data Controller Software

MySDC

User Manual

Version 3.0 · Official Release · April 2026

Comprehensive guide for installation, configuration, and day-to-day operation of the MySDC fiscal signing software on Windows environments.

Installation & Setup

Configuration & Activation

API Reference & Troubleshooting

PREPARED FOR
FRCS

DOCUMENT TYPE
User Manual

CLASSIFICATION
Public Release

18
PAGES

11
SECTIONS

3.0
VERSION

2026
YEAR

1. What is MySDC?

MySDC is an Electronic Sales Data Controller (E-SDC) software for electronic fiscal receipt signing. It runs silently as a Windows Service and communicates with your Point-of-Sale (POS) software through a local HTTP API.

- ▶ Every sales invoice must be digitally signed by MySDC before printing.
- ▶ Signed invoices are stored in audit packages and submitted to TaxCore — the FRCS central server.
- ▶ Customers may verify their receipts at the FRCS verification portal at any time.

2. System Requirements

Ensure the host machine meets all of the following minimum requirements before installation:

Item	Requirement
Operating System	Windows 10 / Windows 11 / Windows Server 2016 or later
.NET Framework	Version 4.8 or higher
RAM	Minimum 512 MB free
Storage	Minimum 1 GB free (for audit packages)
Internet	Required for TaxCore submission
Smart Card	Physical smart card reader

Note: A stable internet connection is essential for TaxCore audit package submission. Offline operation is supported temporarily; packages must be submitted at the earliest opportunity.

3. Installation

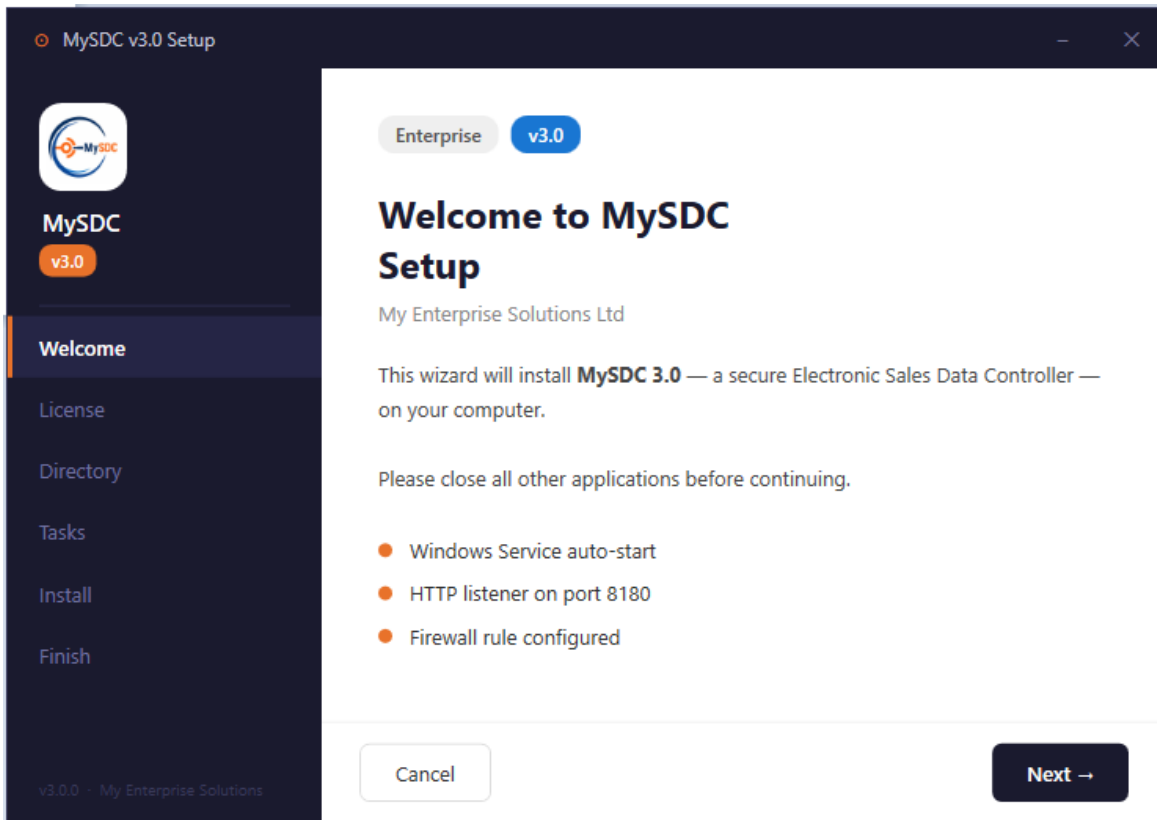
Step 1 — Run the Installer

Double-click MySDC_Setup_v3.0.exe and click Yes on the UAC prompt to run as Administrator. The installer will automatically:

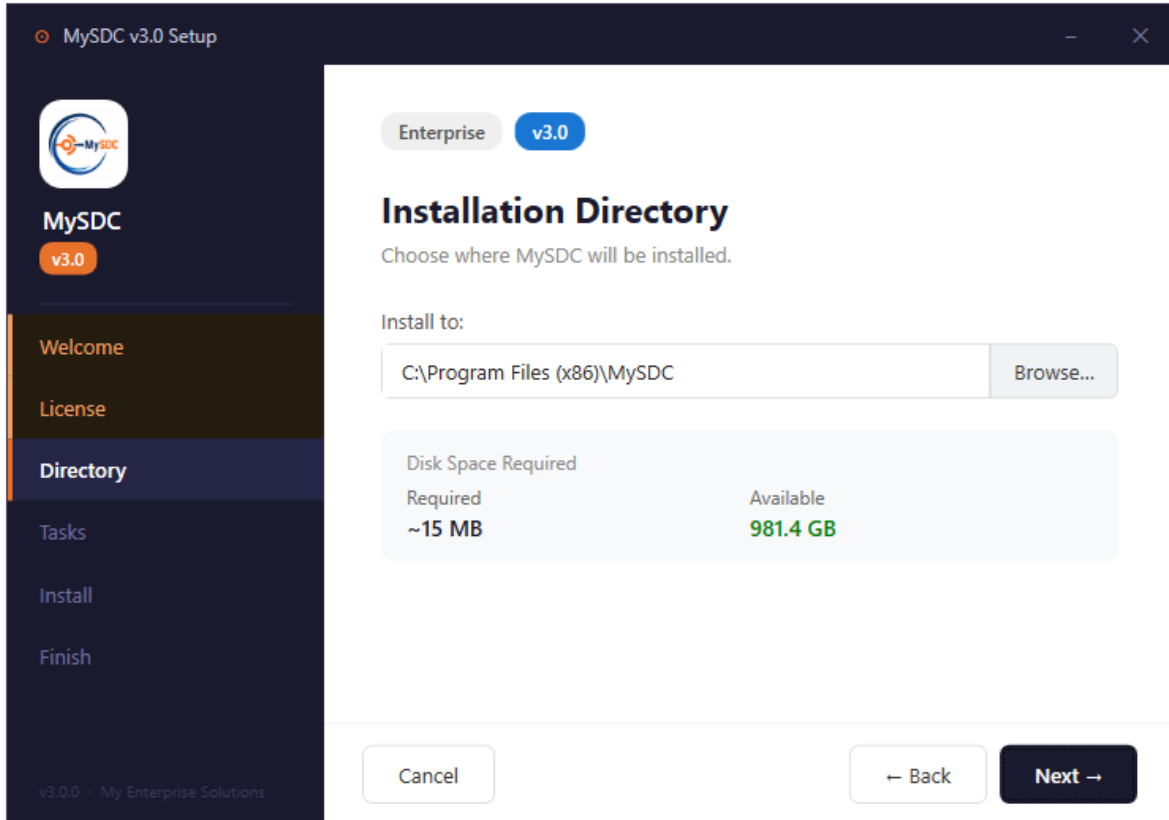
- ▶ Verify that .NET Framework 4.8 is installed.
- ▶ Copy all application files to C:\Program Files\MySDC\
- ▶ Register MySDC as a Windows Service (auto-start on boot).
- ▶ Configure the HTTP listener on port 8180.
- ▶ Add a Windows Firewall rule to allow traffic on port 8180.
- ▶ Optionally add the MySDC Tray App to Windows startup.

Step 2 — Complete the Installation Wizard

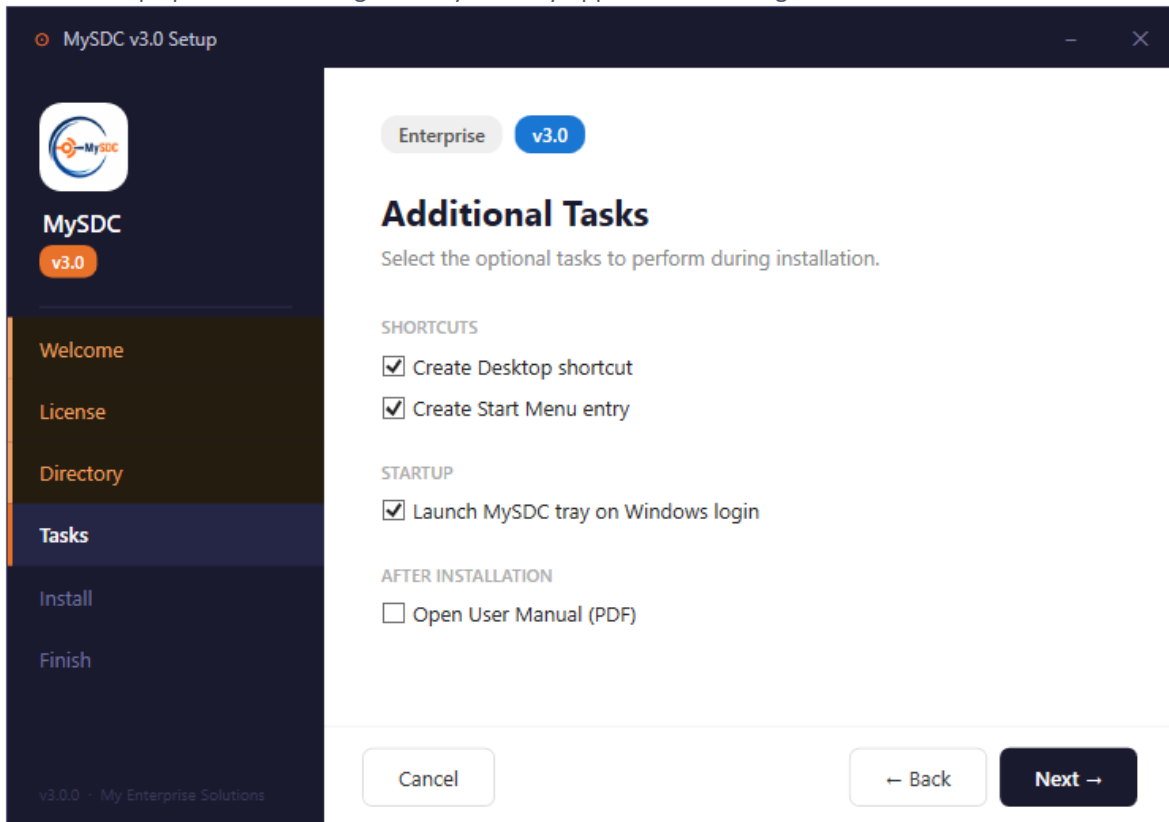
1. Click Next on the welcome screen.



2. Choose your installation folder (the default location is recommended).

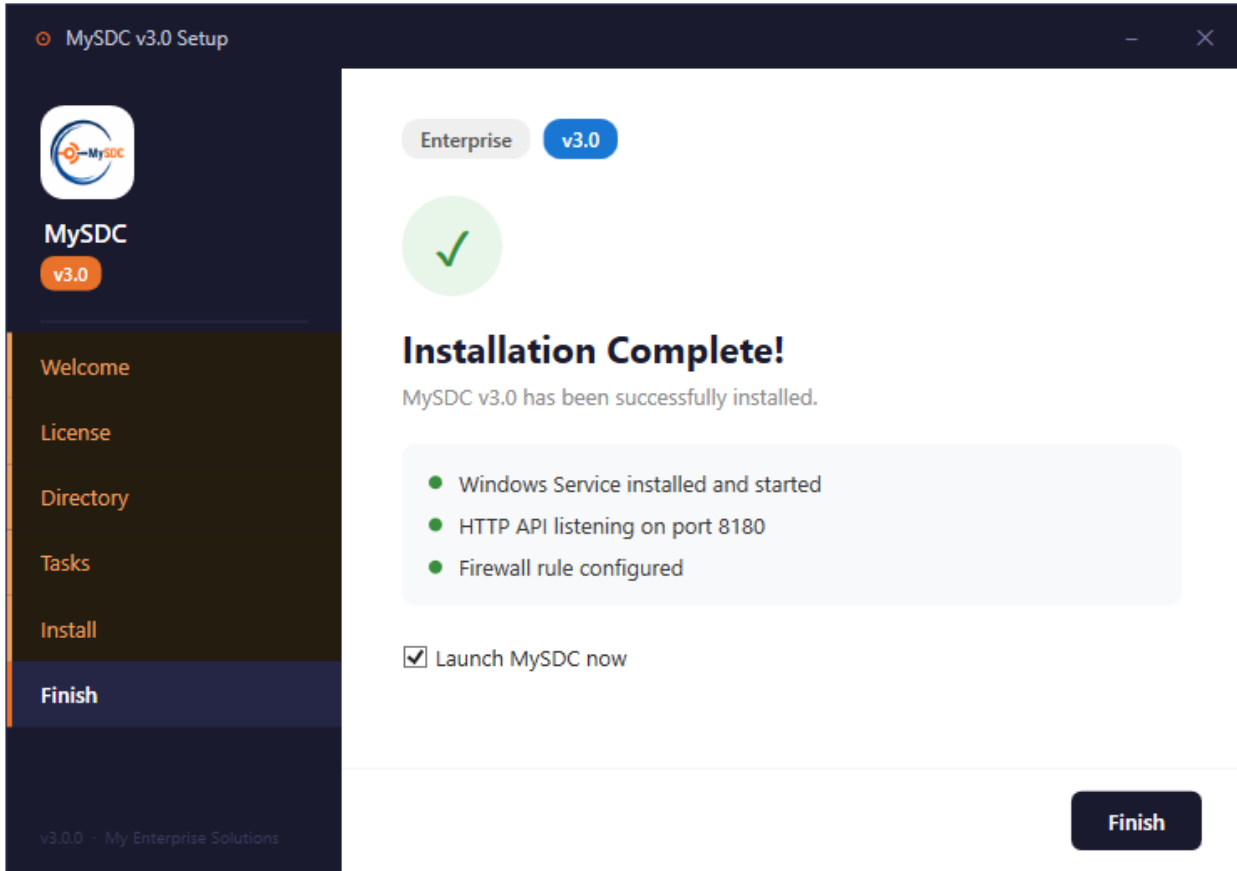


3. Select startup options — enabling Start MySDC Tray App on Windows login is recommended.

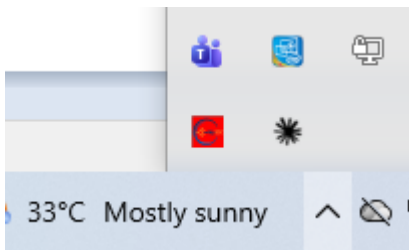


4. Click Install to begin.

5. Once complete, tick Launch MySDC Tray App now and click Finish.



A shield icon will appear in the system tray (bottom-right taskbar).



Step 3 — Verify the Service is Running

Open a web browser and navigate to:

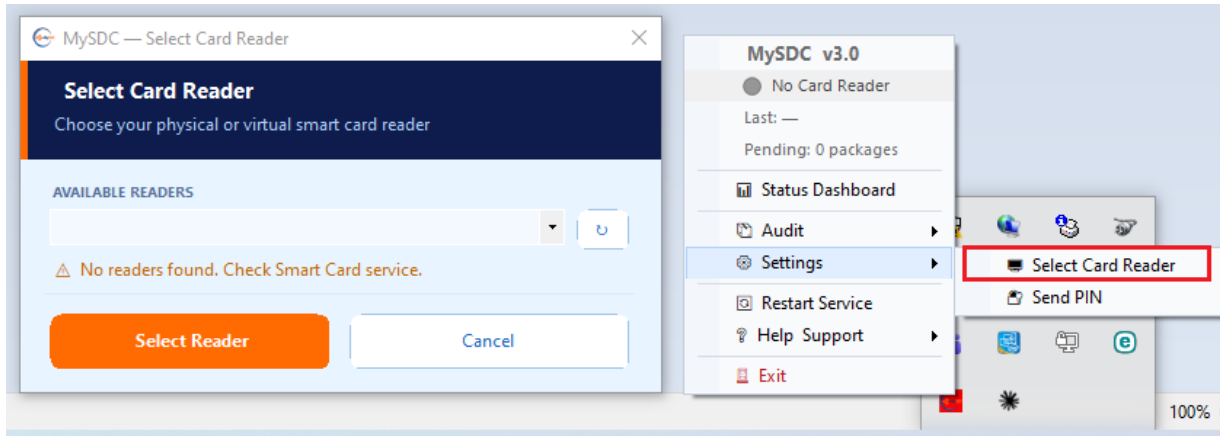
`http://localhost:8180/api/status`

A JSON response with device status confirms the service is running correctly.

4. First Time Setup

4.1 Select the Card Reader

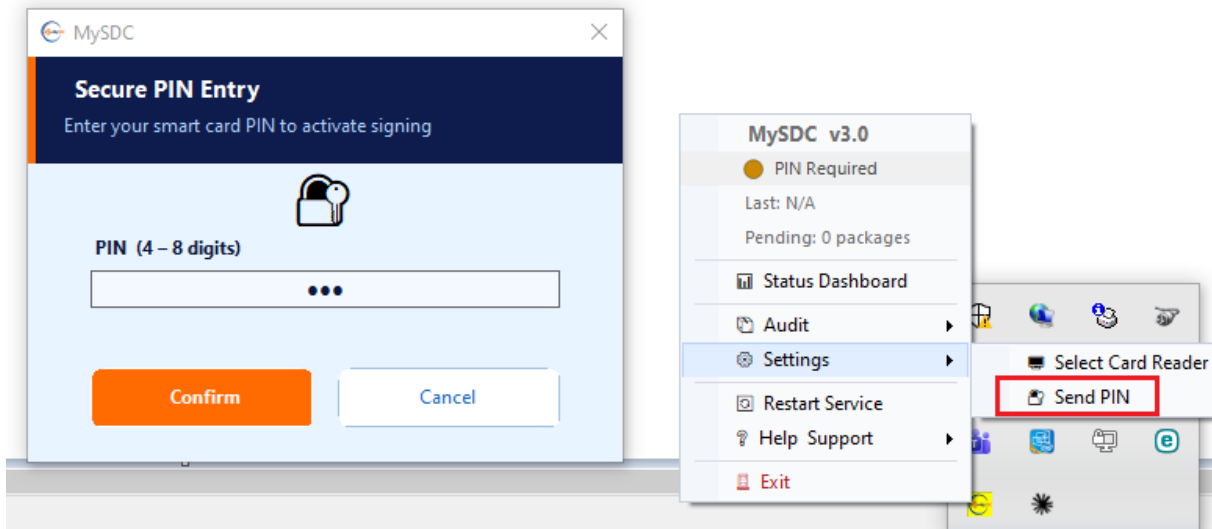
1. Right-click the tray icon > Settings > Select Card Reader.
2. For testing: select DevESDC Virtual Card.
3. For production: select your physical USB smart card reader.
4. Click Select to confirm.



4.2 Send the PIN

After selecting a reader, the icon turns yellow, indicating PIN entry is required.

1. Right-click the tray icon > Send PIN.
2. Enter your 4-digit PIN and click Submit.
3. If accepted, the icon turns green — MySDC is now fully operational.



5. Tray Icon — Status Guide

The tray icon colour provides an at-a-glance status of MySDC:

Colour	Status	Action Required
Green	Ready — signing invoices normally	None
Yellow	PIN required or warning	Enter PIN via tray menu
Red	Error / Offline / Storage Full	Review error details immediately

Detailed Status States

State	Colour	Meaning
Initializing	Yellow	MySDC is starting up
No Reader	Red	No smart card reader selected
PIN Required	Yellow	PIN not yet entered for this session
Ready / Operational	Green	Everything working normally
Audit Required	Yellow	Audit packages need to be submitted
Audit In Progress	Yellow (blinking)	Audit is currently running
Offline	Red	No internet connection to TaxCore
Storage Full	Red	Audit storage is 90% or more full
Clock Problem	Yellow	System clock is out of sync
Error	Red	Smart card error detected

6. Tray Menu — Full Guide

Right-click the tray icon to open the menu. The top section displays real-time device information including current status, API address, certificate validity, last signed invoice, and pending audit packages. The full menu structure is shown below:

```
MySDC v3.0
Online / PIN Ready - 192.168.1.x:8180
Last: INV-001
Pending: 0 packages
-----
Status Dashboard
-----
Audit
  Remote Audit Now
  Local Audit (USB/SD)
  Process Commands from Drive
Settings
  Select Card Reader
  Send PIN
-----
Restart Service
Help Support
  Manual
  Open Support Ticket
  Collect Support Data
  About
  License
Exit
```

7. Invoice Signing (POS Integration)

Your POS software communicates with MySDC through an HTTP API on port 8180. The following endpoints are available:

Endpoint	Method	Description
POST /api/sign	POST	Sign an invoice
POST /api/pin	POST	Verify PIN

Sign Invoice — Example Request

```
POST http://192.168.1.x:8180/api/sign
Content-Type: application/json
{
  "dateAndTimeOfIssue": "2026-04-21T04:34:16.252Z",
  "cashier": "Test Cashier",
  "buyerId": null,
  "invoiceType": 0,
  "transactionType": 0,
  "payment": [
    {
      "paymentType": 1,
      "amount": 109
    }
  ],
  "items": [
    {
      "name": "Product A (Standard VAT)",
      "quantity": 2,
      "unitPrice": 50,
      "totalAmount": 100,
      "labels": [
        "A"
      ]
    },
    {
      "name": "Product B (Zero Rated)",
      "quantity": 1,
      "unitPrice": 9,
      "totalAmount": 9,
      "labels": [
        "B"
      ]
    }
  ]
}
```

Sign Invoice — Example Response

```

{
  "gsC": [
    "0000"
  ],
  "mssc": null,
  "requestedBy": "XXXXXX",
  "signedBy": "XXXXX",
  "sdcDateTime": "2026-04-21T10:24:07+05:30",
  "invoiceCounter": "48/72NS",
  "invoiceCounterExtension": "NS",
  "invoiceNumber": "XXXXX-XXXXX-72",
  "taxItems": [
    {
      "categoryType": 0,
      "rateId": 0,
      "label": "A",
      "taxLabel": "A",
      "amount": 8.2569,
      "taxAmount": 8.2569,
      "rate": 9,
      "taxRate": 9,
      "categoryName": "VAT",
      "totalAmount": 0
    },
    {
      "categoryType": 0,
      "rateId": 0,
      "label": "B",
      "taxLabel": "B",
      "amount": 0,
      "taxAmount": 0,
      "rate": 0,
      "taxRate": 0,
      "categoryName": "VAT",
      "totalAmount": 0
    }
  ],
  "verificationUrl": "https://sandbox.vms.frsc.org.fj/v/?v1XXXXXX",
  "messages": "Success",
  "signedBy2": null,
  "encryptedInternalData": "XXXXXXXX"
  "signature": "XXXXX"
  "totalCounter": 72,
  "transactionTypeCounter": 48,
  "totalAmount": 109,
  "taxGroupRevision": 9,
  "businessName": "My Enterprise Solutions Ltd",
  "tin": "XXXXXXXX",
  "locationName": "My Enterprise Solutions Ltd",
  "address": "Aliz Centre Mantintar",
  "district": "NOT APPLICABLE",
  "mrc": "00-1002-XXXXX"
}

```

Send Pin — Example Request

```

POST http://192.168.1.x:8180/api/pin
Content-Type: application/json
"1234"

```

Send Pin — Example Response

```

"0100"

```

8. Audit

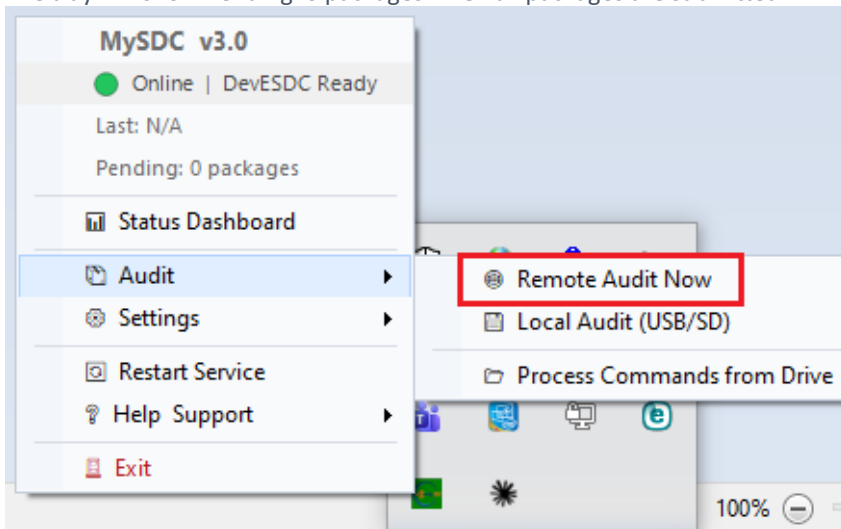
Audit packages contain signed invoice data that must be submitted to FRCS TaxCore servers. MySDC supports both automatic and manual submission methods.

8.1 Remote Audit (Automatic)

- ▶ MySDC automatically submits audit packages every 30 minutes.
- ▶ An active internet connection to TaxCore is required.

8.2 Remote Audit (Manual)

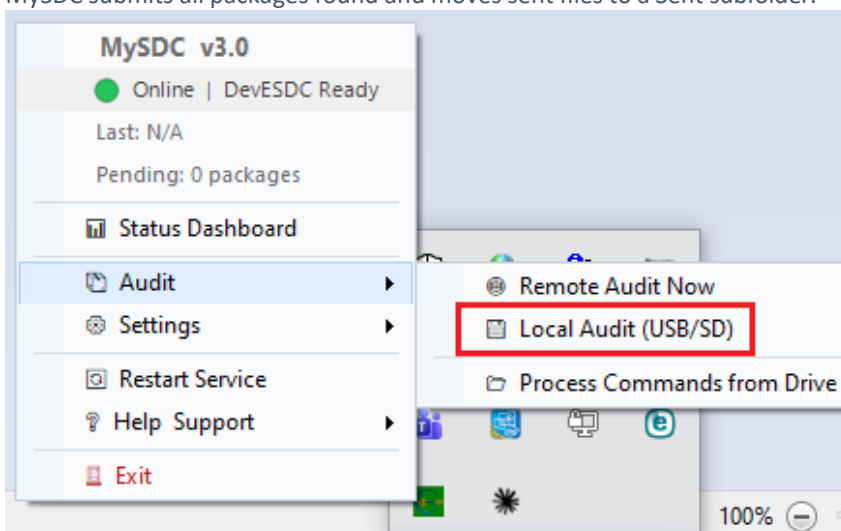
1. Right-click the tray icon > Audit > Remote Audit Now.
2. Wait for the completion notification.
3. The tray will show Pending: 0 packages when all packages are submitted.



8.3 Local Audit (USB or Folder)

Used when audit packages reside on a USB drive, SD card, or any local folder.

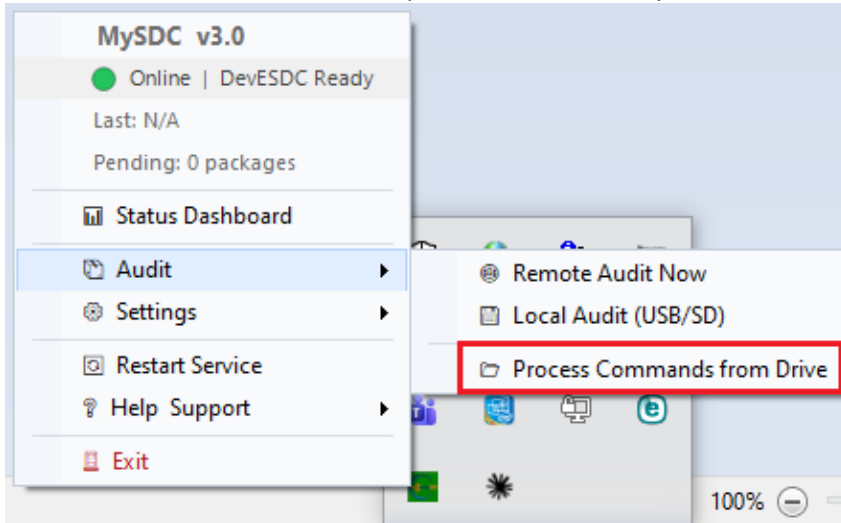
1. Right-click the tray icon > Audit > Local Audit (USB/SD).
2. A folder browser will open — select the folder containing .json audit files.
3. MySDC submits all packages found and moves sent files to a Sent subfolder.



Example path: C:\ProgramData\SoftSDC\AuditDataOutbox

8.4 Process Commands from Drive

1. Insert the USB or SD card containing the FRCS command file.
2. Right-click the tray icon > Audit > Process Commands from Drive.
3. Select the drive — commands will be processed automatically.



Note: MySDC also detects USB insertion automatically and processes commands plus local audit without any manual steps.

Audit Storage Locations

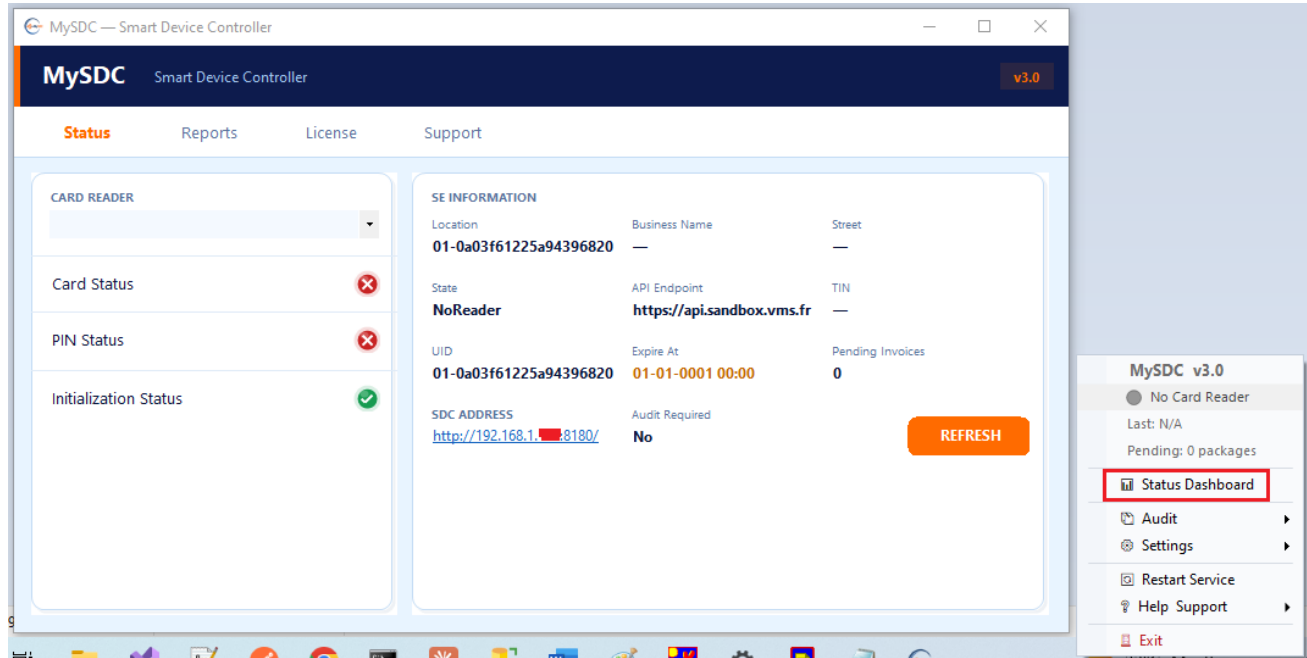
- C:\ProgramData\MySDC\AuditDataOutbox\ — Awaiting submission
- C:\ProgramData\MySDC\AuditDataSent\ — Successfully submitted

9. Settings

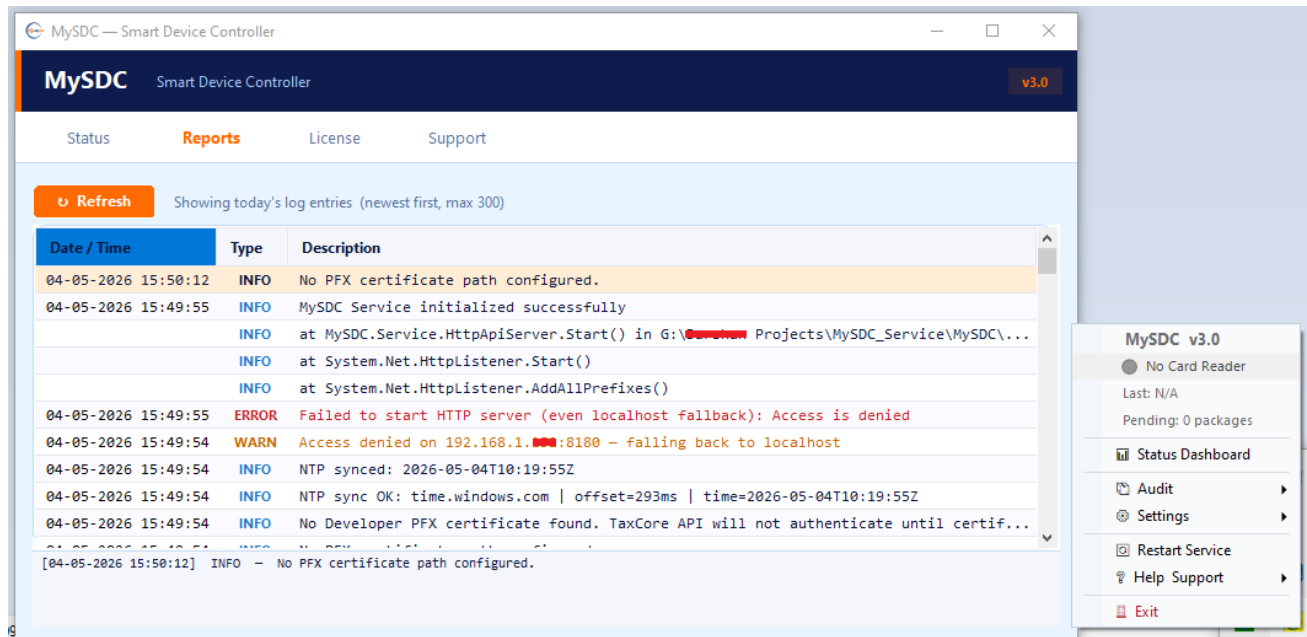
Status Dashboard

Right-click the tray icon > Status Dashboard. This screen shows:

- Status–It will show the card state, PIN state and the other mentioned SE information.

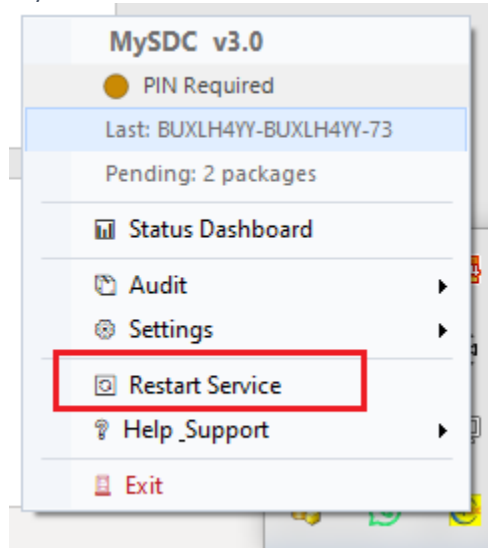


- Reports–It will show the today’s log entries



Restart Service

Select Restart Service from the tray menu if the service becomes unresponsive. It restarts and re-initialises automatically. Remember to re-enter your PIN after every restart.



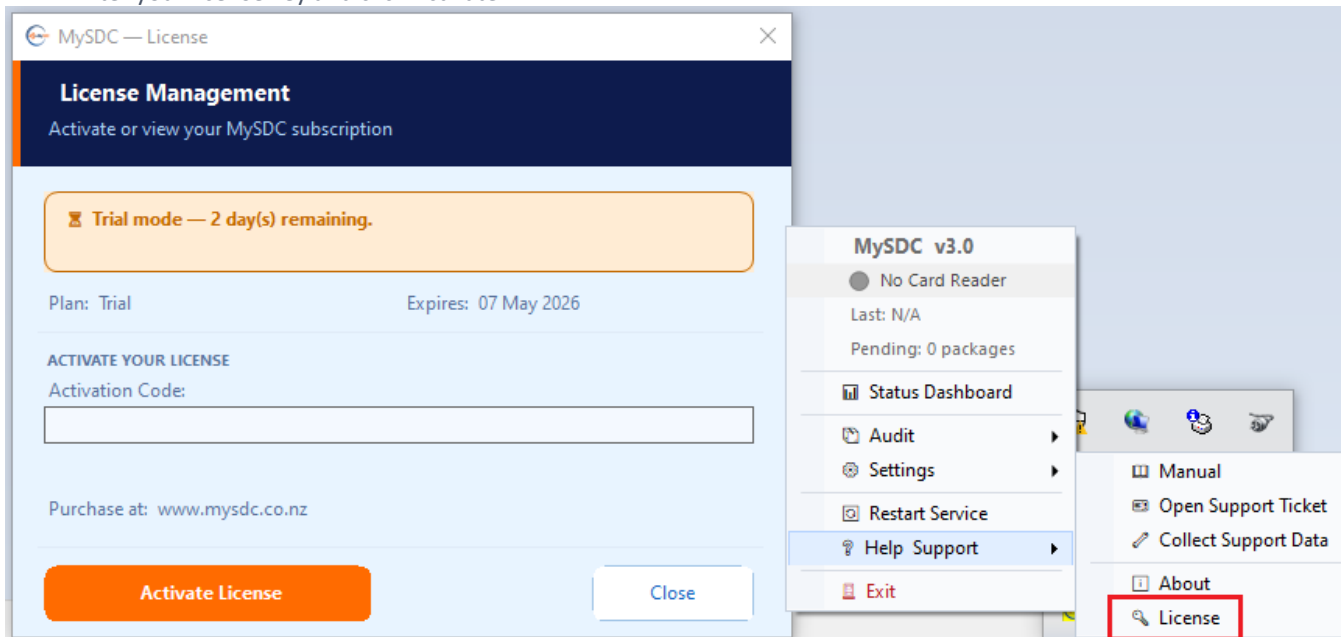
10. License

Trial License

A 3-day free trial is automatically activated on the first run of MySDC. No activation key is required during the trial period.

Activate a License

1. Right-click the tray icon > Help & Support > License.
2. Enter your license key and click Activate.



License Expiry

MySDC displays a warning when the license is near expiry. To renew, contact MySDC support:

Website: <https://www.mysdc.co.nz>

11. Troubleshooting

Refer to the following guidance when encountering common issues with MySDC.

Tray Icon Red — No Reader

The smart card reader has not been selected or is not detected.

1. Right-click the tray icon > Settings > Select Card Reader.
2. Choose your reader from the list and click Select.

Tray Icon Yellow — PIN Required

The service is running but no PIN has been submitted for the current session.

1. Right-click the tray icon > Send PIN.
2. Enter your 4-digit PIN and click Submit.

Invoice Signing Fails — POS Receives an Error

Perform the following checks in order:

- ▶ Confirm the MySDC tray icon is green. Resolve any other status issue first.
- ▶ Open <http://localhost:8180/api/status> in a browser to confirm the service responds.
- ▶ Verify the POS is configured with the correct IP address and port 8180.
- ▶ Review logs at `C:\ProgramData\MySDC\Logs\` for detailed error information.

Pending Packages Count Does Not Reach Zero

1. Right-click the tray icon > Audit > Remote Audit Now to force submission.
2. If submission still fails, verify the internet connection to TaxCore is active.

Certificate Expired or Not Loaded

1. Right-click the tray icon > Settings > Load PFX Certificate.
2. Browse to the replacement .pfx file, enter the password, and click Load.

Service Not Responding

Restart via one of these methods:

- ▶ Tray menu: Right-click the tray icon > Restart Service.
- ▶ Windows Services: Press Win+R > type `services.msc` > locate MySDC Service > right-click > Restart.

Log Files

All activity is logged daily at:

```
C:\ProgramData\MySDC\Logs\mysdc_YYYYMMDD.log
```

To bundle logs for the support team: Right-click the tray icon > Help & Support > Collect Support Data.

Contact Support

- ▶ Website: <https://www.mysdc.co.nz>
- ▶ Support Portal: <https://support.mysdc.co.nz/open.php>
- ▶ User Manual: <https://www.mysdc.co.nz/manual>